

showcase



January 2016

Bi-monthly product-focused newsletter with highlights from the latest issue of Photonics Showcase. Use the Request Info links below to ask for more information about these products, or visit Photonics.com/rssc.

Featured Products

Midori™ Fiber Optic LED Light Source

From: **USHIO America, Inc.**

The Midori™ ULB-35i LED light source combines state-of-the-art, solid-state illumination technology with USHIO's distinctive optical design to create a compact and lightweight fiber optic lightbox with very high output efficacy that is ideal for industrial applications where space is a premium. This LED light source has instant-on and extended electronic intensity dimming capabilities with spectral output below 430 nm and above 700 nm.



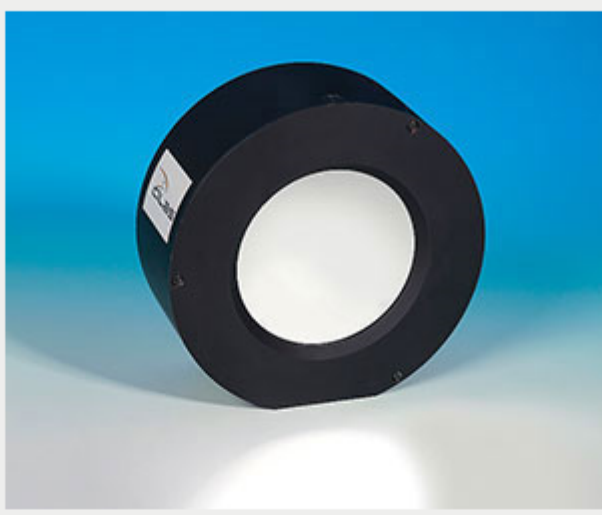
[Request Info](#)

[Visit Website](#)

New Adaptive Optics Loop

From: **CILAS**

With its Monomorph deformable mirrors, CILAS provides a full adaptive optics loop for high power lasers and astronomy applications. Moreover, CILAS achieves developments concerning larger apertures (>150 mm) and high LIDT dielectric coatings optimized for future large-scale laser installations. Besides, the rise of the correction bandwidth (up to 2 kHz sampling frequency) means they can be used for astronomy telescopes and give an affordable solution.



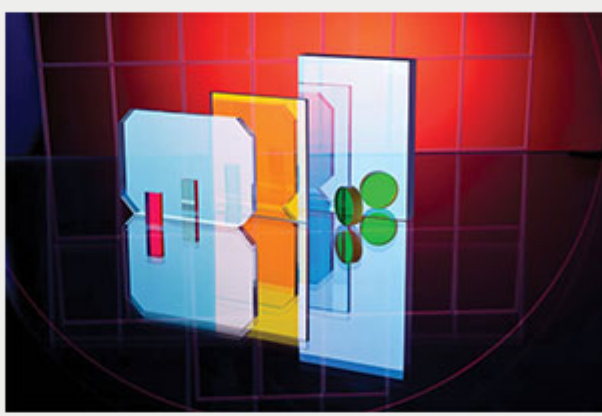
[Request Info](#)

[Visit Website](#)

Flat Top Narrowband Filters

From: **Alluxa**

Alluxa's Ultra Series Flat Top Narrowband Filters offer the narrowest bandwidths and squarest filter profiles in the visible and NIR, with FWHMs of 0.25 nm to 2 nm, transmission levels >90% and OD6 blocking out of band. Applications such as laser cleanup, lidar, telecommunications and instrumentation greatly benefit from their groundbreaking performance.



[Request Info](#)

[Visit Website](#)

sponsor

Additional Products



16-Position Filter Wheel

Applied Scientific Instrumentation, Inc.

ASI's FW-1000 16-position filter wheel utilizes a closed-loop DC servomotor to provide high speed (less than 40 milliseconds between adjacent positions) and low vibration operation (less than 3×10^{-4} kg-m²/s maximum vibration torque impulse).

[Request Info](#)



Everstill™ Active Vibration Cancellation

TMC

The new Everstill™ K-400 compact, bench-top platform isolates ultra-precision instruments from building floor vibration, enabling higher resolution and more precise measurements.

[Request Info](#)



12-in. (300 mm) Fizeau Interferometer

Davidson Optronics, Inc.

Ideal for measuring large optical flats, windows and wafers along with prismatic testing, the DOI-300F incorporates the latest in phase-shifting, camera, laser and software technologies.

[Request Info](#)



Q-Max Compact Precision Stage

Nutec Components Inc.

The Q-Max series is suitable for high-precision, high-stability positioning. Applications are optical metrology, micromachining, laser focusing, semiconductor manufacturing and more.

[Request Info](#)



Silicon Photomultiplier Modules

Hamamatsu Corporation

Modules make it easy to operate the SiPM off a low-voltage power supply. They contain all the components needed to operate the detector, including a temperature compensation circuit for stable performance.

[Request Info](#)



Nanopositioner

Aerotech, Inc.

Aerotech's unique long-travel nanopositioners for applications requiring nanometer and sub-arc-second accuracies are suitable for both laboratory and industrial applications.

[Request Info](#)



Space-Qualified Laser Diodes

Photodigm Inc.

Photodigm's DBR fiber coupled and free space laser diodes are now flying in international payloads on both low orbit and deep space missions.

[Request Info](#)



Custom sCMOS & CCD Cameras

Critical Link, LLC

Critical Link offers customizable sCMOS & CCD cameras for industrial, medical, scientific, defense and surveillance applications.

[Request Info](#)



Phase-Locked Loop Optical Chopper

Terahertz Technologies, Inc.

The C-995 Phase-Locked Loop Optical Chopper provides crystal controlled chopping rates of 4 Hz to 5 KHz using only one blade. The use of direct digital synthesis permits the rate to be set to a precision of 0.001 Hz and provides quartz crystal stability.

[Request Info](#)



USB Shutter

Picard Industries

The Picard Industries USB-Shutter offers a compact and simple method of automating the blocking of a beam path. The pivoting-paddle shutter is powered and controlled through a USB port.

[Request Info](#)



NovaLum 1200: RGB Visible Lasers

Necsel

The NovaLum 1200 RGB offers 1200 lumen brightness levels at D65 and combines red, green and blue lasers into a 400 μm fiber-coupling.

[Request Info](#)



Single Point Diamond Turning

G-S PLASTIC OPTICS

G-S Plastic Optics specializes in single point diamond turning for projects that require quick delivery. Diamond turned prototypes allow you to validate your optical design by rapidly creating a polymer optic for system testing.

[Request Info](#)



High Performance Temperature Controllers

Wavelength Electronics, Inc.

Wavelength offers a complete line of temperature control solutions with demos at Photonics West Booth 4625. Linear or PWM controllers are available with output currents up to 10A and typical stabilities of 0.001 °C or better.

[Request Info](#)



NUV-VIS Zoom Lens System

Navitar, Inc.

The NUV-VIS Motorized Zoom System operates within a spectral range of 330 nm to 700 nm and offers a 6.2:1 zoom ratio. It is an ideal digital imaging solution for high magnification microscopy and OEM applications such as protein crystallography, forensic evidence analysis and surface defect inspection.

[Request Info](#)



PC-Controlled Variable Coupler

Evanescence Optics Inc.

The Model 905(P)-M is a variable-ratio fiber coupler; the ratio can be remotely controlled with a PC through a USB port. Available in SM, non-PM and PM versions, it operates over wavelengths from 590 nm to 2 μm.

[Request Info](#)



LS-Series Linear Stages

Applied Scientific Instrumentation, Inc.

ASI's LS-Series of Linear Stages can be used in many applications that require precision motion control and micropositioning. The LS-Series Stages provide sub-micron accuracy, deriving their precise control by using closed-loop DC servomotors and employing high-resolution rotary encoders for positioning feedback.

[Request Info](#)



Sapphire Wave Plates

Meller Optics, Inc.

Meller Optics sapphire wave plates for Er:YAG and holmium lasers extend polarization into the infrared and provide superior damage resistance to quartz and mica.

[Request Info](#)



PIXCI® EB1mini Camera Link Frame Grabber

EPIX, Inc.

The PIXCI® EB1mini series of camera link frame grabbers use Mini Card slots in small embedded computers. Flexible cables that mount a camera link connector to the side of the enclosure are used on these three new frame grabbers.

[Request Info](#)

Questions: info@photonics.com

[Unsubscribe](#) | [Subscribe](#) | [Subscriptions](#) | [Privacy Policy](#) | [Terms and Conditions of Use](#)

Photonics Media, 100 West St., PO Box 4949, Pittsfield, MA 01202-4949
© 1996 - 2017 Laurin Publishing. All rights reserved. Photonics.com is Registered with the U.S. Patent & Trademark Office. Reproduction in whole or in part without permission is prohibited.