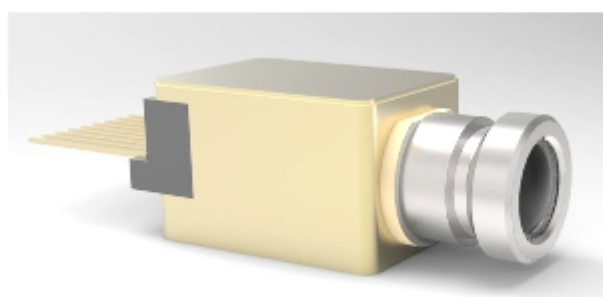


# PHOTONICS spectra®

## PRODUCT SPOTLIGHT



### 1653-nm Laser Diode Module for Methane Gas Detection

1653-nm laser diode in a compact fiber coupled or window package with output power up to 20 mW for the detection of methane concentration in mines, urban integrated pipe galleries, buildings, and households.

*Download the data sheet for more information.*



[Download Now](#)

We respect your time and privacy. You are receiving this email because you are a Photonics Spectra magazine subscriber. You may use the links below to manage your subscriptions or contact us.

Questions: [info@photonics.com](mailto:info@photonics.com)

[Unsubscribe](#) | [Subscribe](#) | [Subscriptions](#) | [Privacy Policy](#) | [Terms and Conditions of Use](#)

Photonics Media, 100 West St., PO Box 4949, Pittsfield, MA 01202-4949

© 1996 - 2022 Laurin Publishing. All rights reserved. Photonics.com is Registered with the U.S. Patent & Trademark Office. Reproduction in whole or in part without permission is prohibited.



LAURIN PUBLISHING

PHOTONICS MEDIA