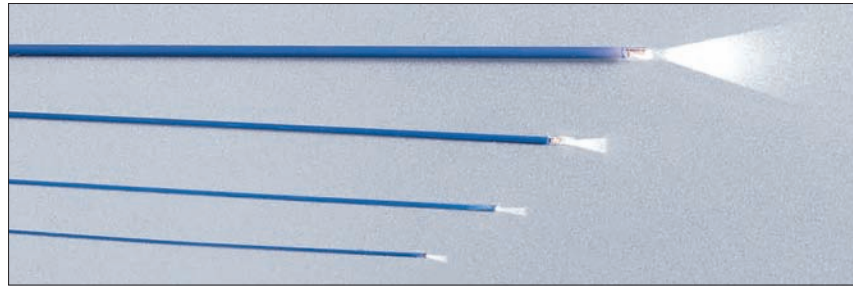


FLEXMAX® OPTICAL FIBERS

FOR USE WITH TRIMEDYNE AND OTHER HOLMIUM LASERS IN LITHOTRIPSY AND OTHER INDICATIONS*

GENERAL INDICATIONS FOR USE

*Any indication for which a Holmium Laser with a compatible connector is cleared, which may include lithotripsy, incision, excision, resection, vaporization, ablation, coagulation, fragmentation of urinary and biliary stones and hemostasis



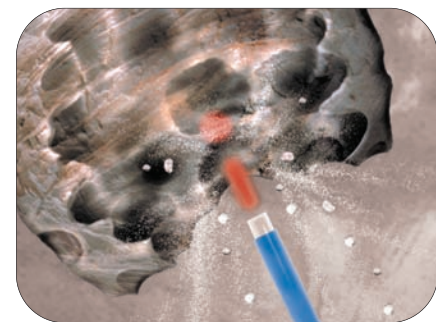
Protected by U.S. patents 4,974,789 and 5,179,610

TRIMEDYNE'S PATENTED FIBER CONNECTOR

- Extends life span of optical fibers
- Protects laser blast shield from damage



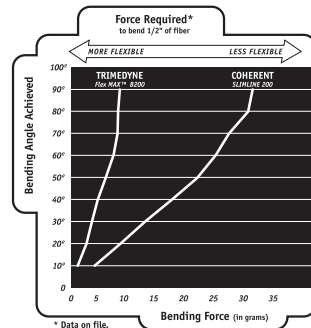
- Maximizes transmission of laser energy
- Also available as an SMA-905 compatible connector
- Protected by U.S. patent 5,179,610



RAPID FRAGMENTATION OF STONES OF ANY COLOR, COMPOSITION OR HARDNESS

Trimedyne's 80 Watt Laser, in DoublePulse™ Mode, moves two pulses together to effectively double the tissue ablation effect*

* Data on file



MAXIMUM FLEXIBILITY

This Graph Illustrates That Trimedyne's FlexMAX® Fibers Are More Flexible Than Optical Fibers of a Leading Competitor

FLEXMAX® OPTICAL FIBER SPECIFICATIONS (Mounted On Trimedyne's Dispensing Reel)

ORDER NO.	DESCRIPTION	FOR USE WITH	MAX O.D. (µM)	FRENCH SIZE	FIBER STRIPPER
B200	Blue 200 micron Fiber, 3 meter	Trimedyne Holmium Lasers	400	1.2	MS1-12S-18-FS
B200SMA	Blue 200 micron Fiber, 3 meter with SMA Connector	Other Holmium Lasers	400	1.2	MS1-12S-18-FS
B365	Blue 365 micron Fiber, 3 meter	Trimedyne Holmium Lasers	550	1.7	MS1-18S-25-FS
B365SMA	Blue 365 micron Fiber, 3 meter with SMA Connector	Other Holmium Lasers	550	1.7	MS1-18S-25-FS
20021-M	Black 550 micron Fiber, 3 meter	Trimedyne Holmium Lasers	1130	3.4	MS1-28S-46-FS
20021M-SMA	Black 550 micron Fiber, 3 meter with SMA Connector	Other Holmium Lasers	1130	3.4	MS1-28S-46-FS
20025-M	Black 1000 micron Fiber, 3 meter	Trimedyne Holmium Lasers	1500	4.5	MS1-44S-63-FS
20025M-SMA	Black 1000 micron Fiber, 3 meter with SMA Connector	Other Holmium Lasers	1500	4.5	MS1-44S-63-FS

FIBER ACCESSORIES

MS-SZR-1	Scissors (for all fibers)
MS-FO-90-DW	Cleaver (for all fibers)

Protected by U.S. Patents No. 5,179,610 and 4,974,789

Trimedyne®



UROLOGY AND SURGERY PRODUCTS

FlexMAX® Optical Fibers



OmniPulse Jr™
30 Watt Holmium Laser



VaporMax® Side Firing Laser Fiber



OmniPulse Max®
80 Watt Holmium Laser



CAUTION: Federal (USA) law restricts these devices to sale by or on the order of a physician.

Specifications subject to change without notice.

©2008 Trimedyne, Inc. All rights reserved.



Trimedyne, Inc. • 25901 Commercentre Drive • Lake Forest, California 92630
Phone 800.733.5273 Ext. 272 • 949.951.3800 Ext. 272 • Fax 949.855.8821
customerservice@trimedyne.com • www.trimedyne.com • info@trimedyne.com

BR # 10116, 02/08 (Urology)

©2008 Trimedyne, Inc.

All rights reserved.

**MULTI-USE CAPABILITIES
CLEARED SPECIALTY
INDICATIONS FOR USE**

UROLOGY
Treatment of BPH, Bladder Tumors, Bladder Neck Contractures, Urethral & Ureteral Strictures, Condyloma

LITHOTRIPSY
Fragmentation of Urinary and Biliary Calculi

LUMBAR, THORACIC & CERVICAL DISCS
Disc Decompression & Discectomy

ORTHOPEDICS
Meniscectomy, Lateral Release, Chondroplasty, Synovectomy, ACL Debridement, Acromioplasty, Subacromial Decompression, Capsulectomy, Debridement of Joints

ENT
Sinusotomy, Turbinectomy, Ethmoidectomy, Polypectomy, Uncinate Process Ablation, DCR, Bony Tissue

GYNECOLOGY
Soft Tissue Ablation, Laparoscopic Procedures

GENERAL SURGERY
Hemorrhoidectomy, Endoscopic and Open Procedures

GI SURGERY
Appendectomy, Gallstones, Endoscopic and Open Procedures

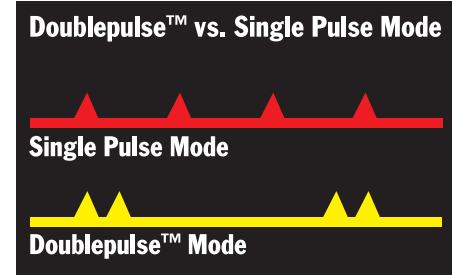
OMNIPULSE MAX[®] 80 WATT HOLMIUM LASER

EASY TO USE LASER WITH EXCLUSIVE FEATURES

- The only Holmium Laser offering Single & Double Pulse Modes. In DoublePulse™ Mode the laser effectively doubles the tissue ablation effect (*Data on file*)
- Only Trimedyne Holmium Lasers have an integrated energy detector for instant fiber power output verification; no pre-use calibration required
- Durable and Reliable with a broad array of cleared indications for use
- Protected by U.S. patents No. 5,179,610 and 5,387,211



INTEGRATED ENERGY DETECTOR
Only Trimedyne offers instant fiber power output verification on its Holmium Lasers



In DoublePulse™ Mode, two pulses are moved together to effectively double the tissue ablation effect (*Data on file*)

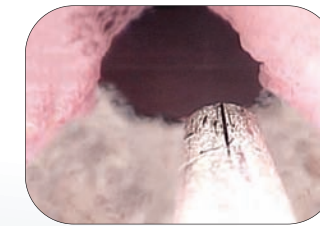
80 WATT LASER SPECIFICATIONS

Specifications	Model 1210-VHP 80 Watt Holmium: YAG Laser Pulsed, solid-state 2100 nm	Output Power	1.5 to 80 watts to tissue
Laser Source		Electrical Service	230 VAC, 40 amps, single phase, 50/60 Hz
Wavelength	2100 nm	Cooling	Self-contained air/water
Energy per Pulse in Single Pulse Mode	0.2 to 3.5 Joules	Aiming Beam	Adjustable, 5mW maximum, red
Effective Energy per Pulse In DoublePulse™ Mode	0.4 to 7.0 Joules	Energy Detector	Integrated fiber power output verification
Pulse Repetition Rate in Single Pulse Mode	5 to 60 Hz	Dimensions	25.5"W x 39.5"L x 48.5"H (65 cm x 100 cm x 123 cm)
Pulse Repetition Rate in DoublePulse™ Mode	3 to 30 Hz	Weight	670 lbs (303 kg)
Pulse Duration in Single Pulse Mode	350 microseconds	Warranty	1 Year parts and labor
Duration of Pulses in DoublePulse™ Mode	700 microseconds	Approval Listing	CE

VAPORMAX[®] SIDE FIRING LASER FIBERS



Prostate Before Treatment**



Prostate During Treatment**

** Model 20440 in use

FOR FASTER SOFT TISSUE LASER VAPORIZATION* AND GREATER DURABILITY*

- For use with Trimedyne's Holmium Lasers and other holmium lasers with SMA compatible connectors and up to 100 watts of power for their cleared indications for use, including the treatment of BPH
- Vaporize an average of 1.0 to 1.2 grams of soft tissue per minute for up to 1 hour*
- Fast, effective coagulation, highly durable, reliable
- Protected by U.S. patents 4,974,787, 4,974,789, 5,179,610, 5,437,660, 5,649,924 and patents pending

* Based on animal soft tissue bench testing using 80 watts of laser power and published data.

Order Number
Model 20440



OMNIPULSE Jr™ 30 WATT HOLMIUM LASER

AN EASY TO USE LASER, GIVING YOU

- 50% to 100% more power than 15 or 20 watt Holmium lasers at an economical price
- 30W of power with a small footprint; ideal for Lithotripsy
- Maximum fiber compatibility: 200 to 1000 micron diameter
- Maximum features, with instant "on" programmable settings, built-in power meter, red aiming beam and no pre-use calibration required
- Maximum confidence, as only Trimedyne Holmium Lasers have an integrated energy detector for instant power verification
- Protected by U.S. patent No. 5,179,610

30 WATT LASER SPECIFICATIONS

Laser Source	Model 1230-30 pulsed, solid-state Holmium:YAG Laser
Wavelength	2100 nm
Energy per Pulse	0.2 to 3.5 joules
Pulse Repetition Rate	5 to 20 Hz
Pulse Duration	350 microseconds nominal
Output Power	1.4 to 30 watts to tissue
Self-Diagnostic System	No alignment or precalibration required
Aiming Beam	Adjustable, 5 mW maximum, red
Electrical Service	230 VAC, 15 Amps, single phase, 50/60 Hz
Dimensions	21"W x 20"L x 36"H (54 cm x 50 cm x 91 cm)
Weight	230 lbs (104 kg)
Cooling	Self-contained air/water
Warranty	One year parts and labor
Energy Detector	Integrated fiber power output verification

VAPORMAX[®] SPECIFICATIONS

ORDER NO. 20440	For Use With Trimedyne Holmium Lasers
Specifications	Single Use, Side Firing Fiber
Outer Diameter	7.0 French, 2.33 mm
Working Length	40 cm, Overall 3 meters
Maximum Operating Parameters	100 watts, 3.3 joules/pulse
Minimum Endoscope Channel	7.5 French, 2.5 mm
Directional Indicators	Red HeNe Aiming Beam