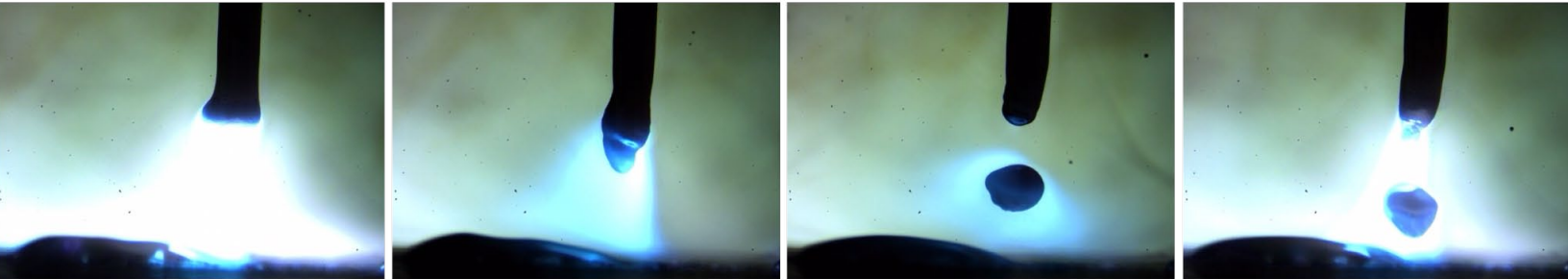


FASTCAM Mini UX100

COMPACT HIGH-SPEED CAMERA SYSTEM



Real Power in a Compact Package

The Photron FASTCAM Mini UX100 high speed camera packs a lot of performance in such a small package, providing 1,280 by 1,024 pixel resolution to 4,000 frames per second (fps) and reduced resolution operation all the way to 800,000 fps, with 1,280(H) by 720 (V), equivalent to 720 HD video resolution, to 6,400 fps. This makes the UX100 a small and lightweight camera ideally suited for applications as varied as fluidics, life sciences or ballistic testing. A global shutter provides blur free imagery with a minimum shutter speed of $1\mu\text{s}$ with 12-bit pixel depth (36-bit for the color version) from the CMOS pixels $10\mu\text{m}$ square pixel providing an ISO 12232 Ssat certified light sensitivity of 10,000 ISO for the monochrome version.



Target applications include:

- Biomechanics
- Life sciences
- Fluid dynamics
- Off board automotive safety testing
- Defense and aerospace research
- Material science

Benefits

- Frame Rate Performance examples:
 - 4,000 fps at 1,280 x 1,024 pixel resolution
 - 5,000 fps at 1,280 x 1,000 pixel resolution
 - 6,250 fps at 1,280 x 800 pixel resolution
 - 10,000 fps at 896 x 488 pixel resolution
 - 25,000 fps at 1,280 x 200 pixel resolution
 - 200,000 fps at 1,280 x 24 pixel resolution
 - 800,000 fps at 640 x 8 pixel resolution
- Self-contained, compact and lightweight camera 120mm (4.7")H x 120mm (4.7")W x 90mm (3.6")D and 1.5Kg
- Sensitivity: ISO 12232 Ssat standard
 - ISO 10,000 monochrome
 - ISO 5,000 color
- Suitable for operation in High-G environments. Operation tested to 100G, 10ms, 6 axis
- 4GB, 8GB and 16GB memory options and high performance GigaBit Ethernet interface to PC



Photron
www.photron.com

FASTCAM Mini UX100

COMPACT HIGH-SPEED CAMERA SYSTEM

Specifications: Partial Frame Rate / Recording Duration Table

FRAME RATE (fps)	MAXIMUM RESOLUTION		RECORD DURATION (12-BIT)							
			Horizontal	Vertical	TIME (Sec.)			FRAMES		
					4GB	8GB	16GB	4GB	8GB	16GB
1,000	1,280	1,024	2.18	4.37	8.73	2,180	4,365	8,734		
2,000	1,280	1,024	1.09	2.18	4.37	2,180	4,365	8,734		
4,000	1,280	1,024	0.55	1.09	2.18	2,180	4,365	8,734		
5,000	1,280	1,000	0.45	0.89	1.79	2,232	4,469	8,943		
6,250	1,280	800	0.45	0.89	1.79	2,791	5,587	11,179		
6,400	1,280	720	0.48	0.97	1.94	3,101	6,208	12,421		
8,000	1,280	616	0.45	0.91	1.81	3,624	7,256	14,519		
10,000	896	488	0.65	1.31	2.62	6,536	13,084	26,181		
16,000	1,280	312	0.45	0.90	1.79	7,156	14,326	28,665		
20,000	1,280	248	0.45	0.90	1.80	9,003	18,023	36,063		
40,000	1,280	120	0.47	0.93	1.86	18,607	37,248	74,531		
80,000	1,280	56	0.50	1.00	2.00	39,872	79,818	159,709		
100,000	1,280	32	0.70	1.40	2.79	69,777	139,682	279,492		
200,000	1,280	24	0.47	0.93	1.86	93,036	186,242	372,656		
800,000	640	8	0.70	1.40	2.79	558,216	1,117,457	2,235,938		

Sensor	1,280 x 1,024 pixels, 10um pixel size, 12-bit ADC (Bayer system color, 36 bit single sensor)	Trigger Modes	Start, Center, End, Manual, Random
Shutter	Global electronic shutter from 20ms to 1 μ s dependent on frame rate	Saved Image Formats	JPEG, AVI, TIFF, BMP, RAW, PNG, MOV and FTIF. Images can be saved with or without image or comment data
Memory	4GB (2,180 frames @ maximum resolution) or 8GB (4,365 frames @ maximum resolution) memory options 16GB (8,734 frames @ maximum resolution) memory options	Data Display	Frame Rate, Shutter Speed, Trigger Mode, Date or Time, Status (Playback/Record), Real Time, Frame Count and Resolution
Camera Control	High speed Gigabit Ethernet	Cooling	Actively cooled using external fans
Low Light Mode	Low light mode drops the frame rate and shutter time to their maximum values, while maintaining other set parameters, to enable users to position and focus the camera	Hi-G Operation	Tested to 100G, 10ms, 6 axis
Triggering	Selectable positive or negative TTL 5Vp-p or switch closure	Operating Temperature	0 - 40 degrees (32 - 104 degree F)
Timing	Internal clock or external source	Mounting	4 x1/4-20UNC
I/O	Input: Trigger (TTL/Switch), Sync, Ready, Event, IRIG Output: Trigger, Sync, Ready, Rec, Expose	Dimensions	120mm (4.7")H x 120mm (4.7")W x 90mm (3.6")D
Phase Lock	Enables cameras to be synchronized precisely together or to a master camera or external source.	Weight	1.5 kg (3.4 lbs)
		Power Requirements	100V-240V AC 40W , 50-60Hz DC operation 22-32 VDC, 40VA

Specifications subject to change without notice

PHOTRON USA, INC.
9520 Padgett Street, Suite 110
San Diego, CA 92126-4446
USA
Tel: 858.684.3555 or 800.585.2129
Fax: 858.684.3558
Email: image@photron.com
www.photron.com

PHOTRON (EUROPE) LIMITED
The Barn, Bottom Road
West Wycombe, Bucks, HP14 4BS
United Kingdom
Tel: +44 (0) 1494 481011
Fax: +44 (0) 1494 487011
Email: image@photron.com
www.photron.com

PHOTRON LIMITED
Fujimi 1-1-8
Chiyoda-Ku, Tokyo 102-0071
Japan
Tel: +81 (0) 3 3238 2107
Fax: +81 (0) 3 3238 2109
Email: image@photron.co.jp
www.photron.co.jp

Photron

SLOW MOTION IMAGING SOLUTIONS