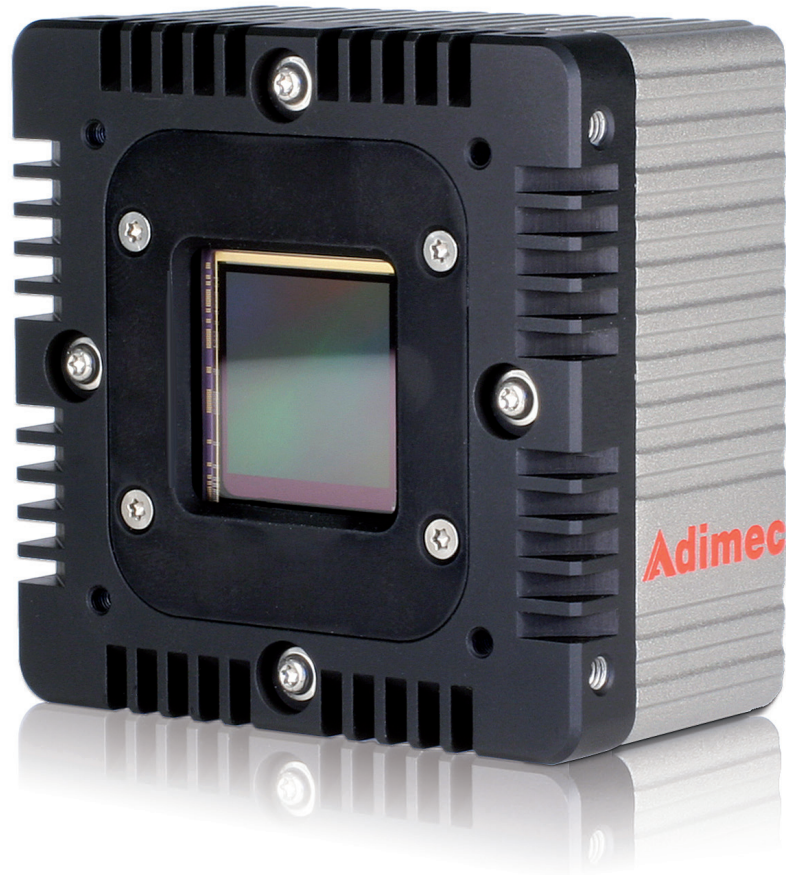




SAPPHIRE series

S-25A30



Key specifications

- 25 mpx at 32 fps
- CMOS global shutter
- Semi-automatic uniformity calibration by Active Sensor Control
- Compact design & low power consumption

Description

The S-25A30 is a 25 megapixel CMOS global shutter camera and delivers images of 5120 x 5120 pixels at 32 fps over Camera Link. Using the standard Region of Interest function the frame rate can be increased, e.g. 100 fps at 8 Mpx. Embedded real-time pixel processing minimizes blemishes and maximises uniformity. The combination of Adimec image quality, form factor and low power usage makes the camera ideal for inspection systems that require high resolution to increase in throughput or accuracy.

Adimec
Excellence in Imaging

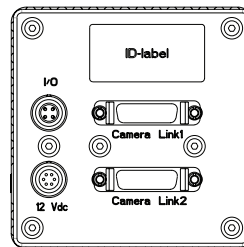
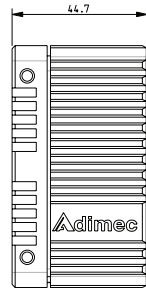
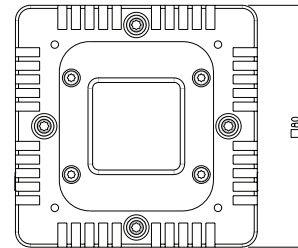
Ultra High Resolution Cameras for Machine Vision

Specifications

S-25A30	
Sensor	CMOS, VITA 25K
Optical size	35 mm
Pixel size	4.5 μm x 4.5 μm
Resolution	5120 x 5120 pixels
Max frame rate	32 fps
Dynamic range	56 dB
Electronic shutter	Global shutter
Image acquisition	Continuous / controlled / triggered
Video output	Camera Link (Full / Deca), 66 or 85 Mhz
Output resolution	8 or 10 bit
Monochrome / color	Monochrome / Color (Bayer RGB)
I/O interface	Programmable strobe output and trigger input
Power input	10.2 - 27.6 Vdc
Region of interest	32 user programmable ROIs with up to 5k pixels per line
Defect pixel correction	Yes, optimized for large area scan and ROI usage
Power dissipation	6.5 W
Operating temperature	-10°C to +40°C
Testing	100 % tested on all specifications
Reliability	MTBF > 75,000 h @ 40°C
Weight	400 g (Excluding lensmount)
Lensmount	M42, T2, F-Nikon and TFL-II lensmount
Compliance	CE, RoHS

All specifications are typical at 25°C unless otherwise specified

Dimensions



Active Sensor Control

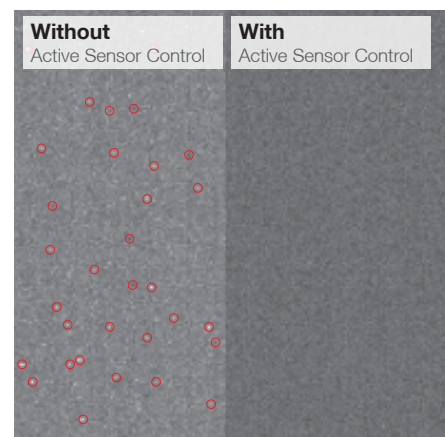
At Adimec we invest heavily in understanding sensors and its characteristics. With over 20 years of experience in managing and tuning sensors in industrial cameras we developed Active Sensor Control. This technology automatically deals with sensor artifacts for optimal images but can also be fine tuned for an optimal fit in accurate inspection and metrology applications.

Semi-automatic calibration by Active Sensor Control

The Sapphire series has a practical and easy to use embedded semi-automatic calibration function. It calibrates the camera without involving up-loading images to a PC. This part of the internal Active Sensor Control eliminates typical large area scan artifacts present in VITA 25K. With Active Sensor Control the 25 megapixel technology can finally be used for accurate inspection and metrology applications.

What does Active Sensor Control do? :

- Minimize blemishes in VITA 25K
- Compensate for typical large area scan optical artifacts like shading
- Deal with typical sensor response related to timing and temperature



○: Pixel blemish

Image taken with a uniform light source and 8x gain.

For maximum image quality, performance, and reliability in demanding applications - Choose Adimec

North America Phone: (+1) 781-279-0770 Fax: (+1) 781-279-0771 E-mail: salesus@adimec.com	Europe Phone: (+31) 40-2353920 Fax: (+31) 40-2353925 E-mail: saleseu@adimec.com	Japan & Korea Phone: (+81) 3-5968-8377 Fax: (+81) 3-5968-8388 E-mail: salesjp@adimec.com	Asia - Pacific Phone: (+65) 6334-1236 Fax: (+65) 6334-1436 E-mail: salesap@adimec.com
---	--	---	--

LFL SAPPHIRE series rev7 Febr 2016 - Detailed information on request - Subject to change without notice - Actual products may differ from photos

Adimec
www.adimec.com