

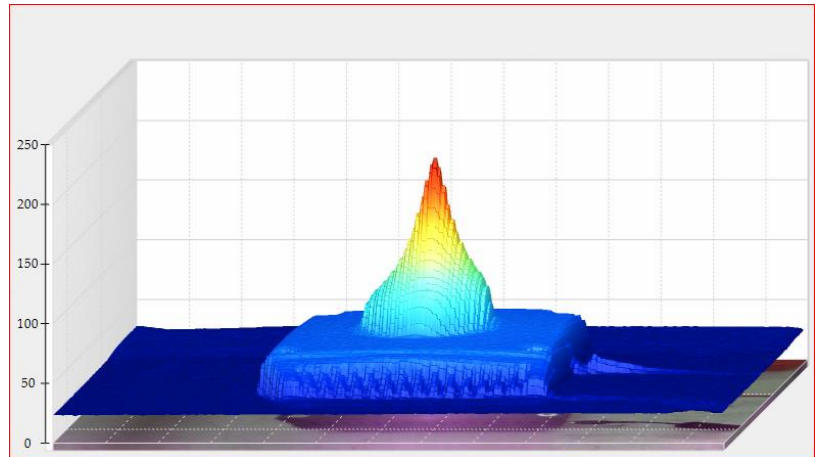
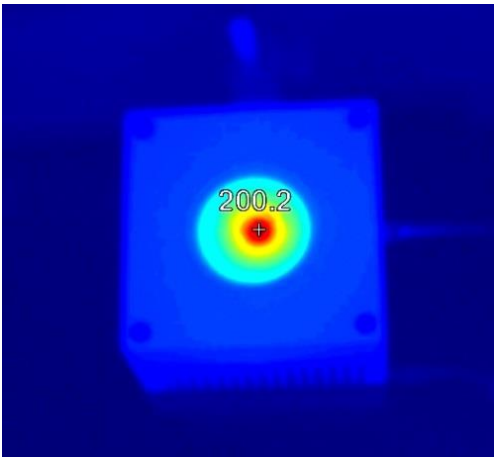
## The Result of a Perfect Design Optimization: Air Cooled Power Meter for 1.2kW



LaserPoint introduces a new instrument that can safely face the extremely high power densities of our days' lasers and which synthesize the technological level of the Company. Also in this instrument, the presence of SHC as radiation absorber leads to achieve both a higher absolute power measurement capability with very compact footprints and a higher damage of threshold.

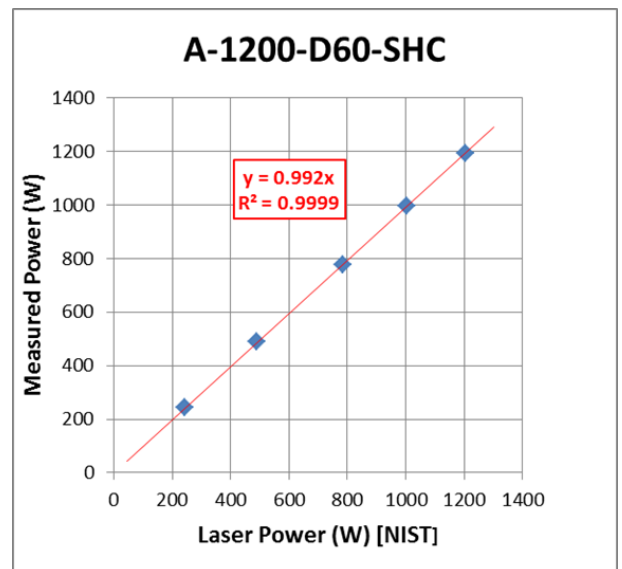
Laserpoint, who has been leading the technology in the past years with an air cooled detector for 600 W (850W for short term measurements) designed for the fiber laser market, is now offering a detector with forced air cooling for 1200 W (Mod. A-1200-D60-SHC) . It is a leap ahead in thermal management, coating improvement, optimization of design.

This detector has a Linearity of  $\pm 1.5\%$  to its full scale and is supplied with  $\pm 3\%$  calibration accuracy traceable to PTB/NIST standards.



Mod. A-1200-D60-SHC: Thermal images of the absorbing surface at 1200W- Max. Temperature in the coating is 200°C ( IPG fiber laser YLS 2000)

Mod. A-1200-D60-SHC: Linearity



## Mod. A-1200-D60-SHC Specifications

### Features:

- Air cooled head to 1200 W
- 5 kW/cm<sup>2</sup> @1 kW
- Forced AirCooling

Model	A-1200-D60-SHC
<b>Power Mode</b>	
Max. Average Power	1200 W
Max. Intermittent Power <sup>(1)</sup>	n.a.
Min. Power	2 W
Power Resolution	100 mW
Noise Equivalent Power (NEP)	100 mW
Response Time	4.5 sec
Power Calibration Uncertainty	± 3%
Power Linearity <sup>(2)</sup>	± 1.5%
<b>Single Shot Energy Mode</b>	
Max. Energy (with 100 ms pulse)	1200 J
Min. Energy	5 J
Energy Resolution	100 mJ
Energy Calibration Uncertainty	± 5%
<b>Absorber Specs</b>	
Aperture	60 mm
Type	SHC
Absorber Spectral Range	0.19 - 11 μm
Calibration Spectral Range	0.25 - 1.1 μm, 9 - 11 μm
Max Power Density <sup>(3)</sup>	5 kW/cm <sup>2</sup> @1 kW
Max Energy Density <sup>(3)</sup>	5ms pulse width: 115 J/cm <sup>2</sup> 10μs pulse width: 4 J/cm <sup>2</sup> 10ns pulse width: 1 J/cm <sup>2</sup>
<b>General Characteristics</b>	
Cooling	Forced Air with Fan (a)
Weight	4.4 kg
Dimension	143 x 143 x 132 mm
Cable lenght - connector	5 m - DB15
Stand and Post	Heavy Duty Stand Included
<b>Notes</b>	
(1). 2 minutes max (2). Detector centrally irradiated @50% of useful surface. (3). Damage thresholds also depend on power level. Please see damage graphs for more details.	(a). 12V DC Power Supply Included