

VINDEN EX

CONTINUOUS ZOOM THERMAL CHASSIS CAMERAS



SIERRA-OLYMPIC
Technologies Inc.



VINDEN 105 EX

VINDEN 150 EX

VINDEN EX 640 X 480 WITH CONTINUOUS ZOOM OPTIC AND ADVANCED THERMAL IMAGE PROCESSING FOR INTEGRATORS AND END-USERS

NEW! NOW AVAILABLE WITH 50-150MM ZOOM OPTIC.

Vinden EX is an affordable, effective thermal imaging camera that combines the best uncooled FPA technology available with an effective and efficient continuous zoom optic. With a 12X zoom factor for 640 x 480, Vinden EX offers thermal imaging users an affordable and effective thermal zoom chassis camera.

Designed for integrators, the Vinden EX offers IP-Video output with H.264 and MJPEG streams and Ethernet control. Simultaneous analog video output and 14-bit CameraLink digital output are also available. Optional control via serial com is also offered. For integrators, individual harness micro-connectors or 30-pin FFC offers integration flexibility. But most importantly, the Vinden EX 640 offers an amazing 1.5 degree HFOV in full optical/digital zoom. A highly parfocal optic keeps objects in perfect focus through the zoom range. The camera supports parfocality at any object distance. An integrated auto-focus command eases user interface issues.

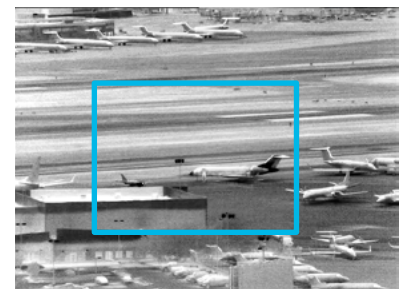
Vinden EX is an ideal tool for Security/Surveillance integrators, or any thermal video user who requires advanced continuous zoom thermal imaging capabilities.



WIDE



MEDIUM



NARROW



NARROW WITH DIGITAL ZOOM

VINDEN EX

CONTINUOUS ZOOM THERMAL CHASSIS CAMERAS



SIERRA-OLYMPIC
Technologies Inc.

APPLICATIONS:

- + Systems integrators
- + Infrastructure security
- + Port and harbor security
- + Defense applications
- + Thermal PTZ systems

FEATURE SPECIFICATIONS:

Optical zoom	3x	
Digital zoom	640 x 480: 4X	
Total zoom, 640 x 480	12x	
Total zoom, 320 x 240	6x	
Lens	35-105mm	50-150mm
HFOV, 640 x 480, Optical Zoom	5.9°-17.1°	12.4°-4.2°
HFOV, 320 x 240, Optical Zoom	3.0°-8.9°	6.2°-2.1°
HFOV w/ eZoom	1.5°	
Sensors	VOx Uncooled Microbolometer	
Available Resolutions	640 x 480	
Pixel Pitch	17 µm	
Wavelength	8-12 µm	
Optical design	Continuous zoom LWIR	
EFL	35-105 mm	50-150mm
F#	1.6	
Front element coating	Hard-carbon	
Analog output	NTSC or PAL	
Digital output	14-bit CameraLink	
IP Video output	MJPEG or H.264 compressed	
IP Broadcast	Unicast / Multicast	
Video output selection	All simultaneous	

CAMERA FEATURES:

- + Continuous zoom
- + Analog, digital, IP-video outputs
- + Multiple HDR image display modes
- + Scene-based auto-focus
- + Tightly integrated camera / lens / processor design
- + Ethernet connectivity
- + On board streaming storage
- + Non-ITAR design

Ethernet protocol	UDP
System control	Serial or Ethernet
On board video storage	Up to 32 GB micro SD
Hardware interfaces	3X Molex Picoblade and 30-pin x 0.5mm FFC
Optional interface	Rear-mounted connector board
Image processing	Brightness/contrast, CLAHE, LAP, Auto histogram
Image de-noise	Spatial and temporal
Process mixing	Alpha mixing of Histogram w/LAP or CLAHE
Palettes	Monochrome, Color
On-board NUC	Via internal shutter or external no-shutter
Operating Temperature Range	-20 to +67C
Shock	Operating: 10G. Non-operating: 70G
Certification	RoHS
Power	12 VDC, 4 Watts max
Weight (35-105mm)	VN320 = 852gm VN640 = 859gm
Weight (50-150m)	VN320 = 1579gm VN640 = 1586gm
Dimensions (35-105mm)	160mm x 82mm 6.27in. x 3.23 in.
Dimensions (50-150mm)	193mm x 125mm 7.60in. x 4.92in

Specifications and descriptions subject to change without notice.