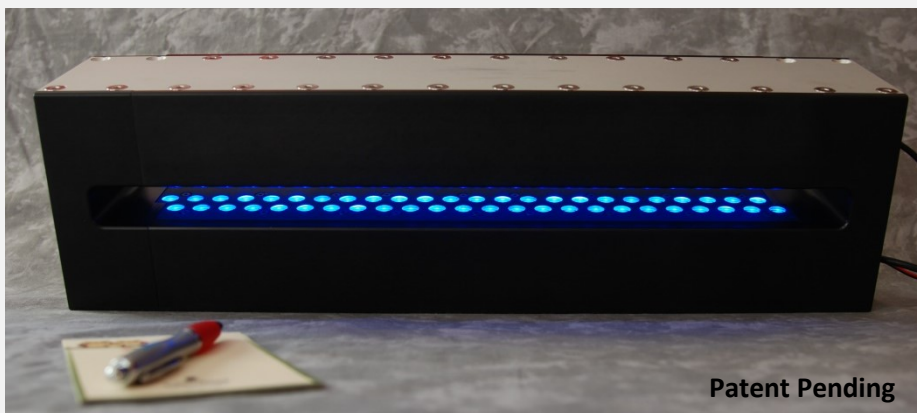


Ready-to-Go *Infinity Series*

Continuous Transverse/Cross-Web Optical Monitoring

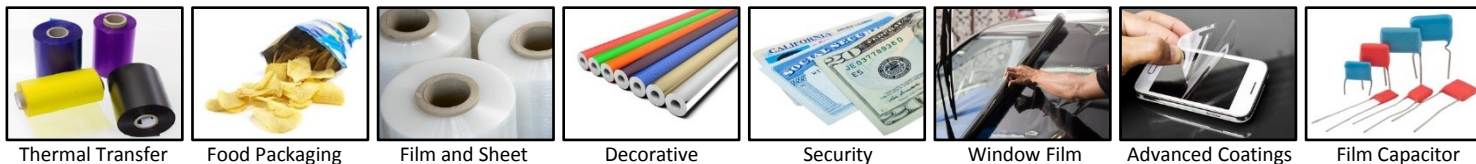
The RTG-Infinity Series

- Industrial Strength
- RTGLS-Infinity Multi-LED Light Source
- RTGOM-Infinity Multi-sensor Optical Monitor
- Overlapping "Infinite" linear monitoring across web
- Infrared, Specific Color, or separate RGB transmission, reflectance and optical density monitoring
- Custom wavelength solutions available
- Familiar L&M interface and API
- USB or RS485

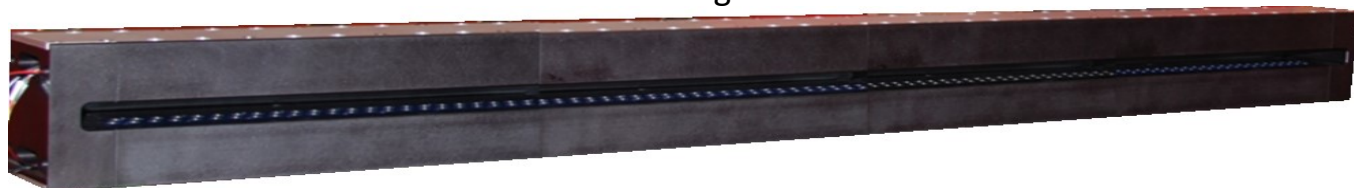


Single-Segment RTG-Infinity with Left and Right End-Caps

RTG-Infinity Applications



100% Cross-Web Coverage. NO MOVING PARTS



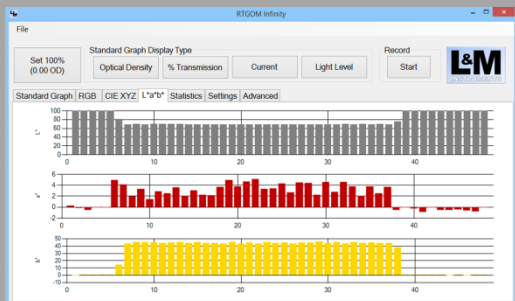
4 segment system shown. Segments mate together, mechanically, to monitor any width of web with no gaps.

The RTG-Infinity Series offers true, 100% cross-web monitoring of optical layer thickness (optical density), transmission, or reflectance. The Patent-Pending design provides linearly-overlapping sensor areas for full coverage across the width of the web; large surface-area detection zones for high dynamic range; and innovative parallel sampling techniques to capture 100's of data points in real-time.

FREE Software and Sample Code available to get you up and running quickly

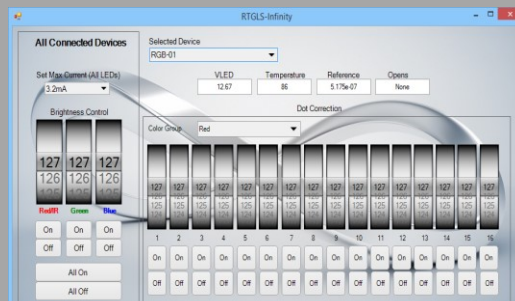
RTGOM-Infinity Application

Shown monitoring $L^*a^*b^*$ color.



RTGLS-Infinity Application

For individual LED control.

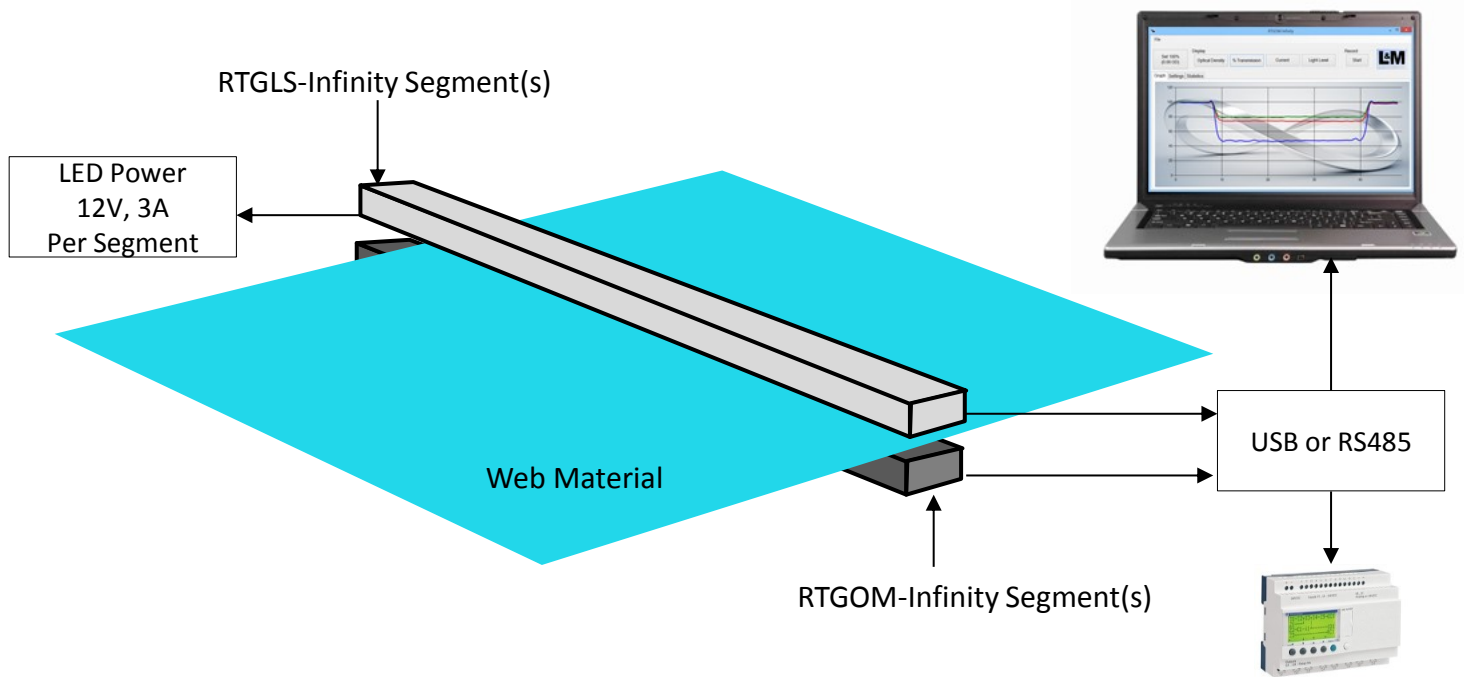


Key Specifications

Dimensions per Segment	16.2 x 5.7 x 4.0 in 41.1 x 14.5 x 10.2 cm	Connectivity	USB 2.0, RS485
Dimensions with End-Caps	Add 2.0 in / 5.1 cm to overall length	Dynamic Range (Automatic Gain Control)	6+ Decades 1nA to 1ma
Weight	25.0 lbs per segment 11.4 kg per segment	Diode Response*: RTGOM-03-48-Si	Wavelength 350nm-1100nm
Operating Temperature	-40 to 155 deg F -40 to 68 deg C	LED Peak/Dominant/Half-Width*: RTGLS-03-48-RGB Blue RTGLS-03-48-RGB Green RTGLS-03-48-RGB Red RTGLS-03-48-950	Wavelength 461/465/25nm 515/525/30nm 650/630/27nm 950/940/42nm
USB/+5V Current Draw per Segment	350mA Typ.	Included/FREE Application OS Sample Code License	Win 7/8/10 MIT
LED Power per Segment	12V @ 3A		

Specifications subject to change.

RTG-Infinity Series Block Diagram



Rugged, Simple, Low-Power, 100% Coverage, No Moving Parts

Model Numbers:

RTGOM-03-48-Si, 48 Sensor Silicon Detection
RTGLS-03-48-RGB, 48 RGB LED's for Color Monitoring
RTGLS-03-48-950, 48 950m LED's for O.D. Monitoring

*Custom RTGLS LED wavelengths, RTGOM photodiodes, and multiple Source/Detector physical orientation designs available based on minimum order quantity and/or NRE fees.

Copyright© 2016 L and M Instruments LLC



1902 Wright Place Carlsbad, CA 92008
 Ph: (760)-918-5670

www.landminstruments.com