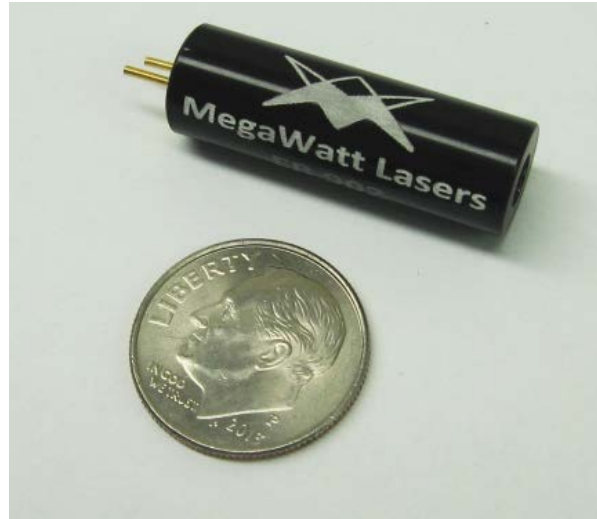




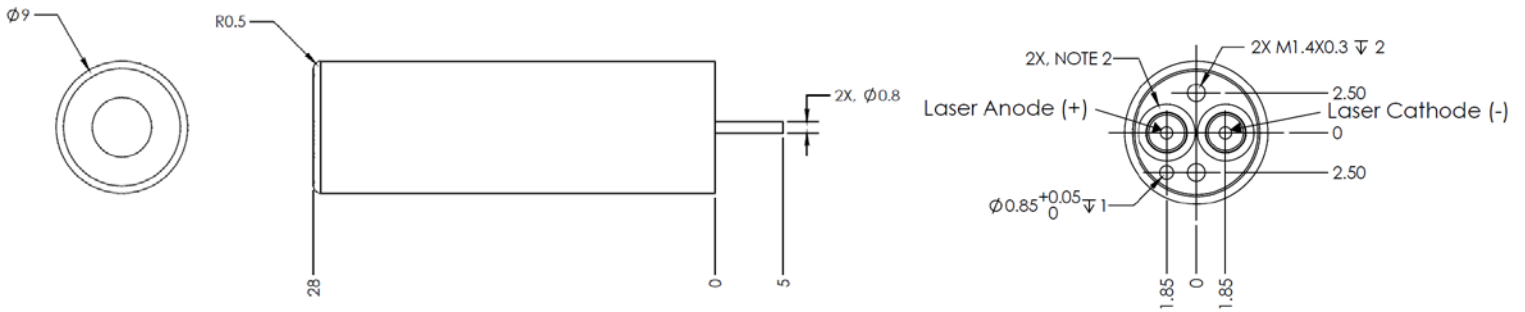
ER902 MINIATURE SOLID-STATE LASER



Diode-Pumped, Passively Q-Switched, Er:Glass Laser Packaged

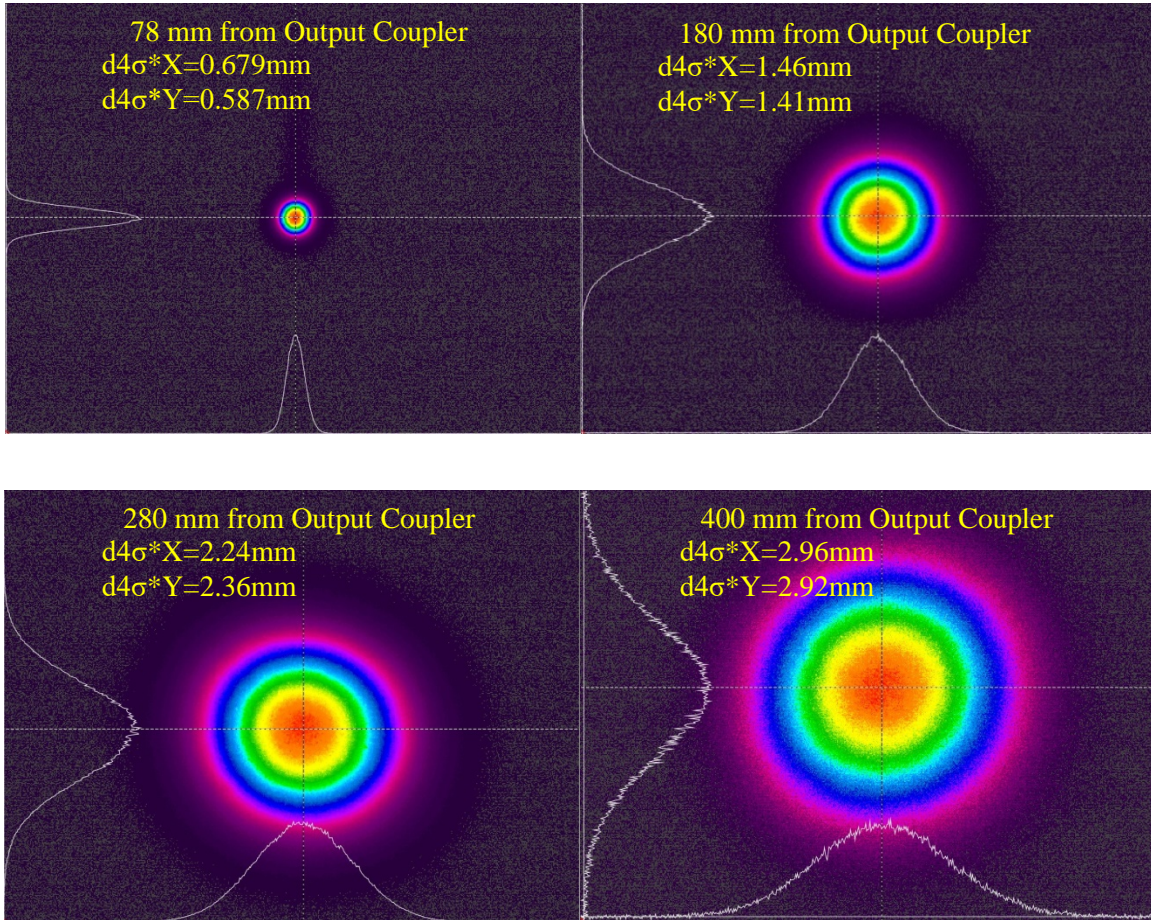
Standard Specifications

| Parameter | Nominal Value |
|--------------------------|---|
| Wavelength: | 1.535 μm |
| Pulse Energy: | 200 μJ nominal |
| Pulse Width: | Approx. 4 ns |
| Build up time: | ~2.0 mS typical |
| Peak Power: | 50-75 kW |
| Repetition Rate: | Single Shot to 10 Hz Burst mode available |
| Operational Temperature: | -40 to 65° C |
| Beam Quality: | TEM ₀₀₀ , Near Diffraction Limited |
| Divergence: | ~7 mRad |
| Power Requirement: | ≤6 Amp Pulse, 2V |
| Standby Power | <i>not required</i> |
| Cooling | <i>not required</i> |
| Power Requirement: | ≤6 Amp Pulse, 2V |
| Lead solder | 320°C, 10 Sec maximum |



For more information contact: sales@megawattlasers.com

Beam Propagation, ER902



$d4\sigma$ Divergence $\approx 7 \text{ mRad}$

