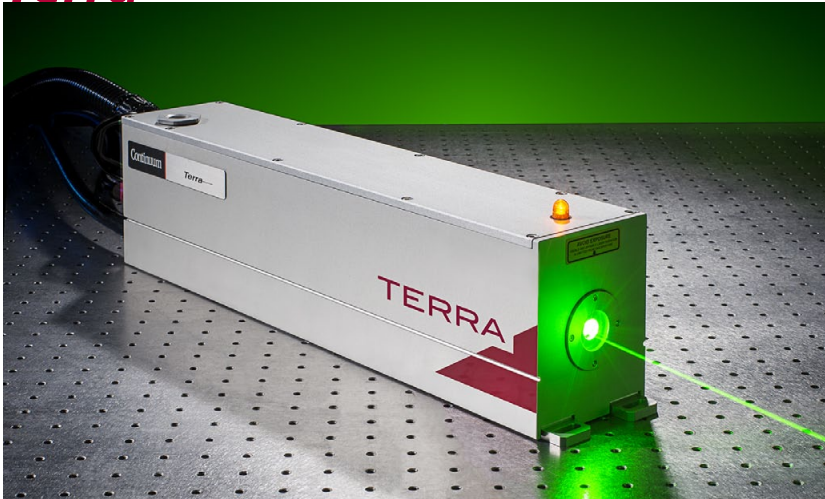


Diode Pumped Nd:YLF Diode Pumped Nd:YLF Diode Pumped Nd:YLF

Terra™



Terra, the diode pumped Nd:YLF laser

The Terra Nd:YLF laser is the smallest laser in its class. It produces high average power (>50 W) at kilohertz repetition rates. Our proprietary intracavity frequency doubling results in high conversion efficiency, without resorting to the tight focusing in the doubling crystal, which is normally necessary in an extracavity design and leads to possible optical damage. Our proprietary pump chamber design further increases the system's overall efficiency. High pulse energy, smallest M^2 , and small jitter are all available in this extremely compact and highly ruggedized package, optimized for pumping Ti:Sapphire amplifiers.

>30 mJ pulse energy at 1kHz

Average power >50 W @ 3 kHz

Repetition rates up to 10 kHz

Exceptional beam pointing and power stability

Compact, rugged & hermetically sealed laser head

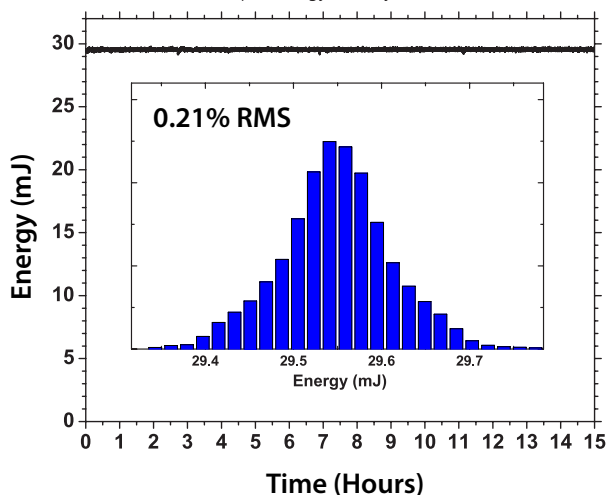
Quick & easy diode module replacement (3min)

Proprietary pump chamber design for optimal beam quality

Optimized for ultrafast amplifier pumping

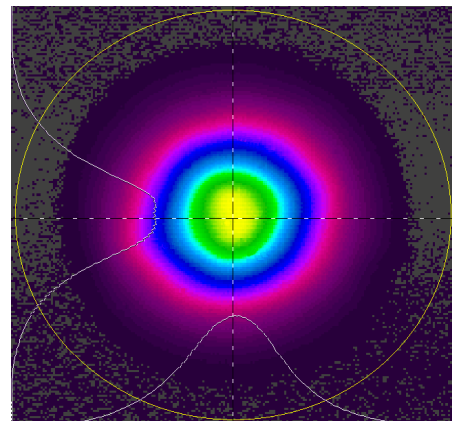
Terra Energy Stability

Terra-527-40-M output energy stability measurement



Terra Beam Profile

Uniform Spatial Profile is optimized for Ti:Sapphire pumping



Terra Specifications

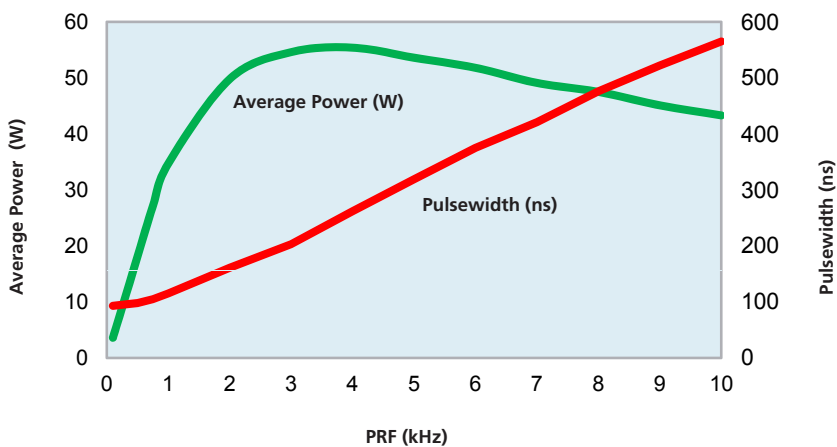
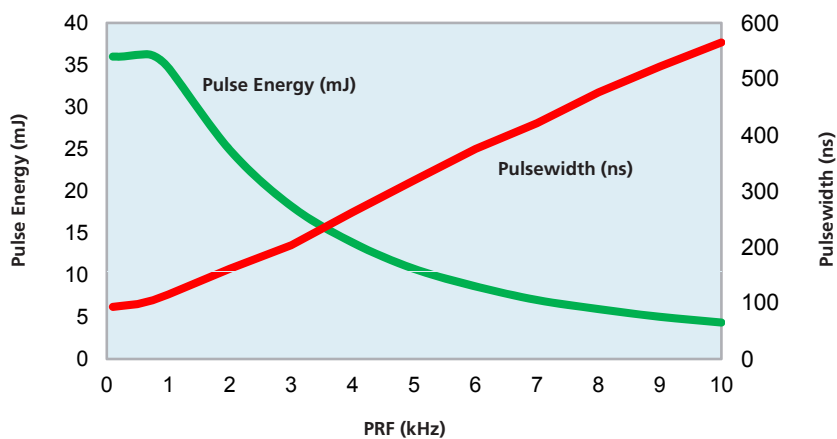
Description ¹	527-50-M	527-40-M	527-30-M	527-20-M
Transverse Mode	MM	MM	MM	MM
Pulse Energy at 0.1-1 kHz (mJ)	30	25	20	15
Pulse Repetition Rate (kHz) ²	0.1-10	0.1-10	0.1-10	0.1-10
Average Power @ 3 kHz (W)	50	40	30	20
Pulsewidth (ns)	<140	<150	<160	<170
Energy Stability (% RMS)	<0.5	<0.5	<0.5	<0.5
Beam Pointing Stability (μrad)	<25	<25	<25	<25
Beam Diameter at Output (mm) ^{3, 4}	2.5	2.5	2.5	2.5
Beam Quality (M ²)	<12	<12	<12	<12
Beam Divergence (mrad) ³	8	8	8	8
Time Jitter (ns RMS)	<3	<3	<3	<3
Polarization (vertical/horizontal)	H	H	H	H

Notes

1. All specifications at 1kHz unless otherwise noted
2. Single shot to 0.1 kHz available with external trigger
3. Typical measurement (±10%)
4. Measured at 13.5% level at output window

As a part of our continuous improvement program, all specifications are subject to change without notice.

Laser System Output Characteristics Terra 527-50-M Performance Curves



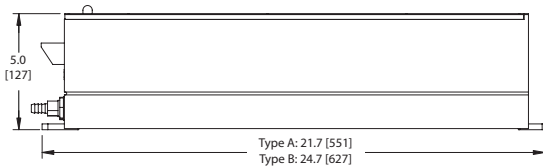
Terra System Requirements

Size	Optical Head (LxWxH)	A) 551 x 102 x 127 mm (21.7 x 4.0 x 5.0 in) mm models; B) 627 x 102 x 127 mm (24.7 x 4.0 x 5.0 in) TEM ₀₀ mode
	Power Supply (LxWxH) Chiller (LxWxH)	509 x 483 x 177 mm (20.0 x 19.0 x 7.0 in) 699 x 483 x 411 mm (27.5 x 19.0 x 16.2 in)
Weight	Optical Head	A) 9 kg (20 lbs) B) 10.5 kg (23 lbs)
	Power Supply Chiller	17.7 kg (39 lbs) 55 kg (122 lbs)
Cooling		Air-Water; Water-Water cooling option available
Electrical Service	Power Supply	Single-phase: 200-240 VAC, 50/60 Hz Operating current: 5A, Max current: 10A
	Chiller	Single-phase: 230 ±10% VAC, 50/60 Hz Operating current: 10A, Max current: 15A
Temperature & Humidity	Operating Temperature Storage Temperature Relative Humidity	15 to 35° C -20 to 50° C 8-80%, non-condensing
Umbilical Length		3.65 m (12.0 ft)
Control Interface	Serial Interface	RS-232
	Rear Connections	External beam enable, External trigger
	Control Software	MS Windows-based Laser Commander

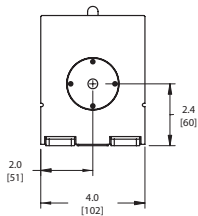
Terra Physical Layout

All dimensions are in inches [mm]

SIDE VIEW

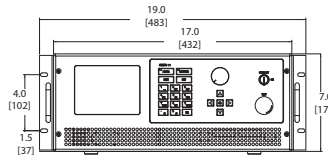


FRONT VIEW

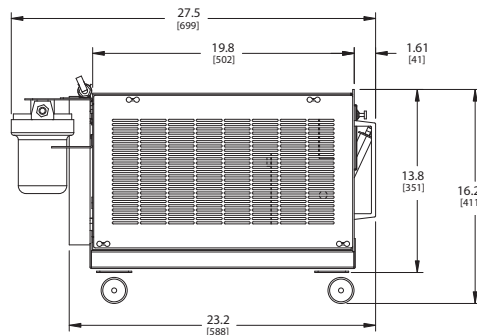
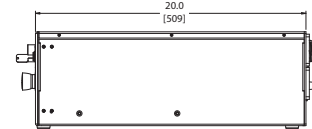


Terra Power Supply

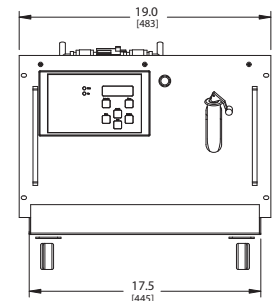
FRONT VIEW Power Supply



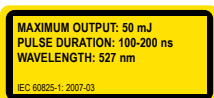
SIDE VIEW



SIDE VIEW Chiller



FRONT VIEW



Amplitude Laser Group
Continuum | Amplitude Technologies | Amplitude Systèmes

140 Baytech Drive, San Jose, CA, USA

Tel 408.727.3240

www.continuumlasers.com

992-0096, Rev. E 09/16

© 2016 Continuum



Continuum[®]
The High Energy Laser Company™