

**FEATURES**

- Red to Near Infrared Enhanced Photodiode
- Photosensitive Active Area: Circular 2.52mm Diameter
- Superior Responsivity with Low Reverse Bias
- High Sensitivity: 0.62 A/W ( $\lambda=850\text{nm}$ ), 0.35A/W  $\lambda=1064\text{nm}$ )
- Rugged Ceramic Chip Carrier Surface Mount Device
- > 98 % AR Coated Transmission Window
- Wide Operating Temperature: -40°C TO +125°C
- RoHS and REACH Compliant

**APPLICATIONS**

- Ideal for Laser Monitoring
- Biological, Dental, and Medical Equipment, Plus Fluid Dynamics, Manufacturing, and Military Applications
- Rugged for Industrial Automation, Sheet Metal, Pipe Cutting, Engraving, Etching, and Marking other Manufacturing Environments

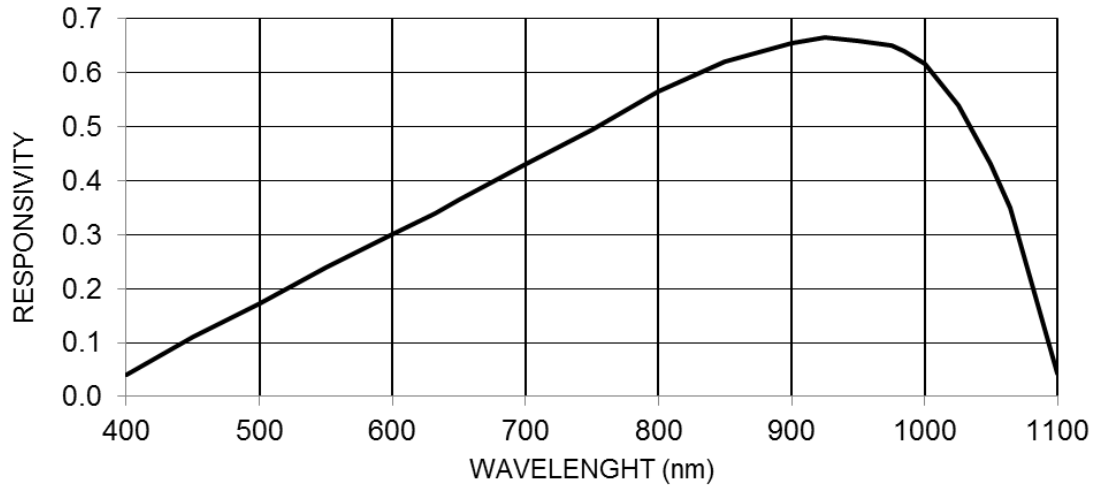
**ELECTRO-OPTICAL CHARACTERISTICS AT 25°C**

PARAMETERS	TEST CONDITIONS	MIN	TYP	MAX	UNITS
Active Area			5		mm <sup>2</sup>
Spectral Response Range $\lambda$		320		1100	nm
Responsivity, $\mathcal{R}$	@ 850nm		.62		A/W
Responsivity, $\mathcal{R}$	@ 1064nm		.35		A/W
Dark Current, $I_{dr}$	$V_r = 10\text{V}$		1	3	nA
Shunt Resistance	$V_R = 10\text{mV}$	100	180		M $\Omega$
Reverse Breakdown Voltage, $V_R$	$I_R = 10\mu\text{A}$	25	60		Volts
Capacitance, C	$V_R = 10\text{V}$		5		pF
Rise Time	$V_R = 10\text{V}$		10		nsec

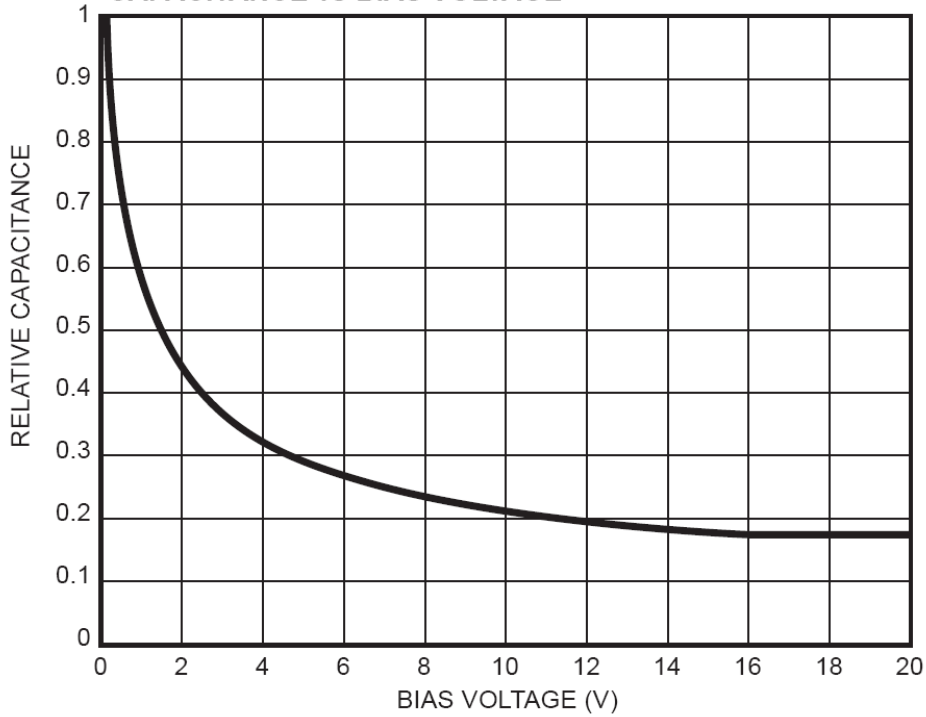
**THERMAL PARAMETERS**

Storage and Operating Temperature Range	-40°C TO 125°C
Maximum Junction Temperature	125°C

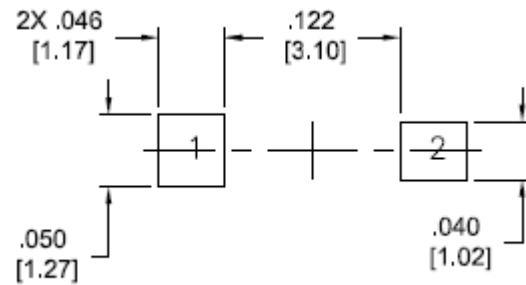
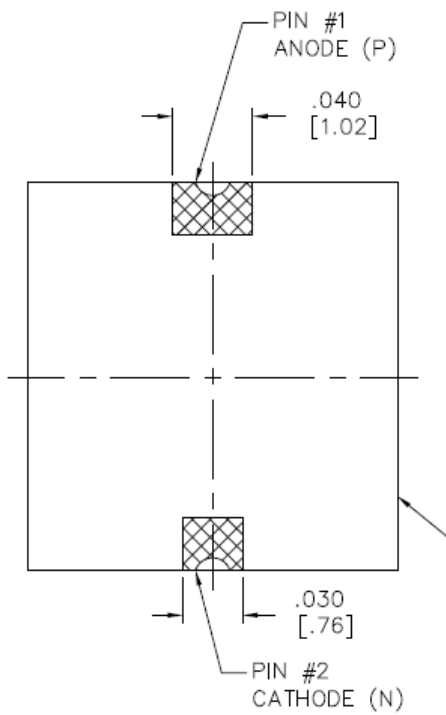
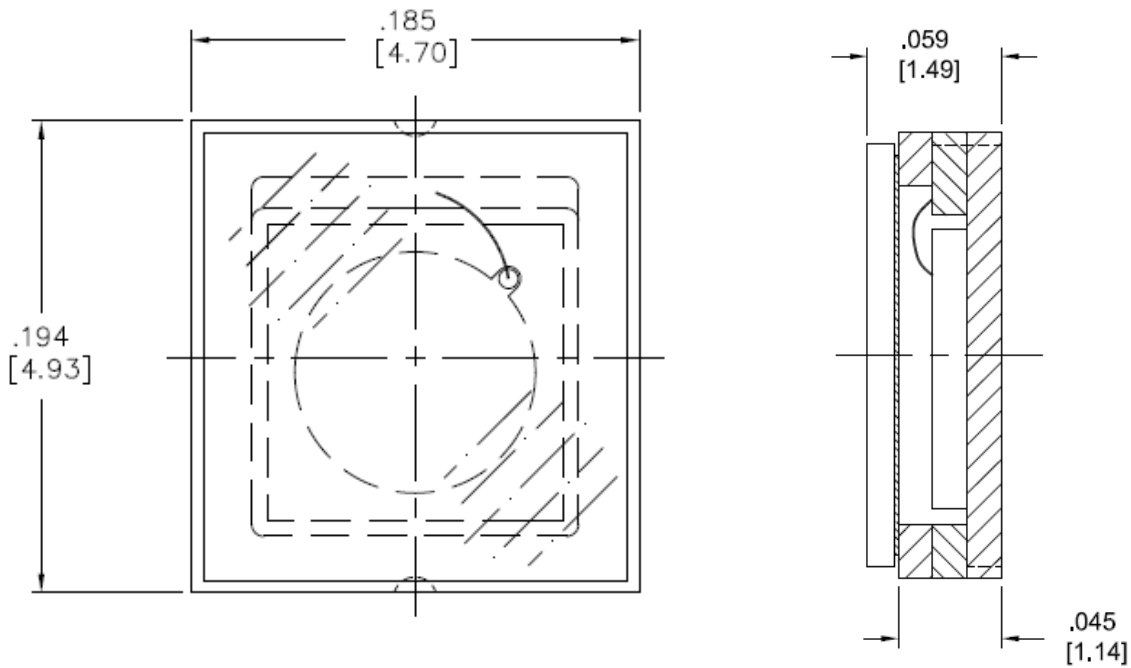
TYPICAL SPECTRAL RESPONSE



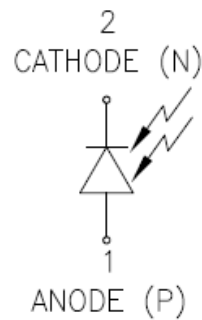
CAPACITANCE vs BIAS VOLTAGE



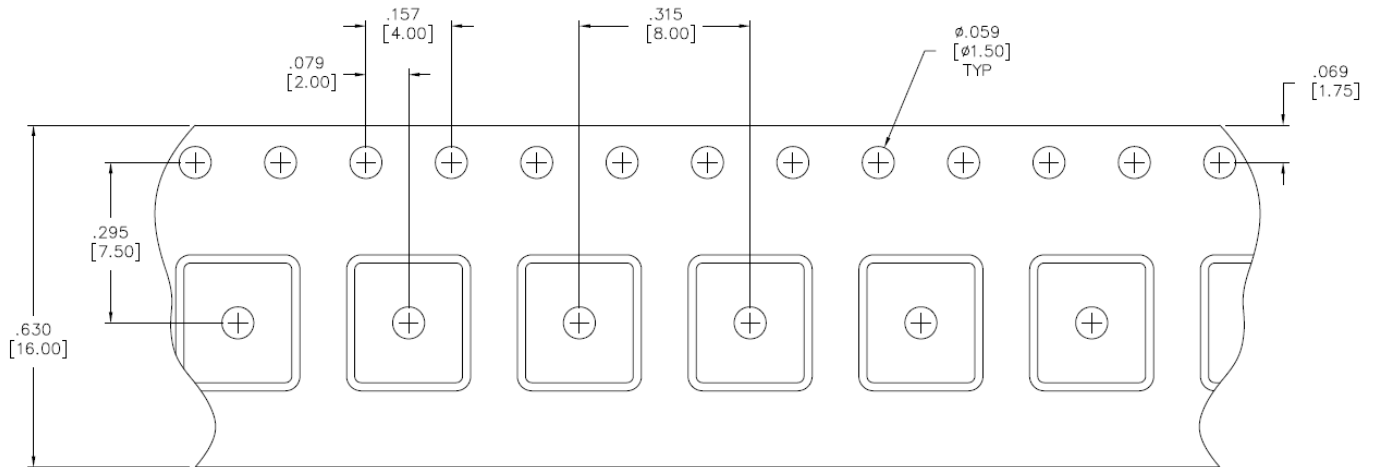
PACKAGE DIMENSIONS



LAND PATTERN



**TAPE AND REEL DIMENSIONS**



**ORDERING INFORMATION**

ODD-1064-002 Ceramic Chip Carrier SMD Package with LID on Tape and Reel