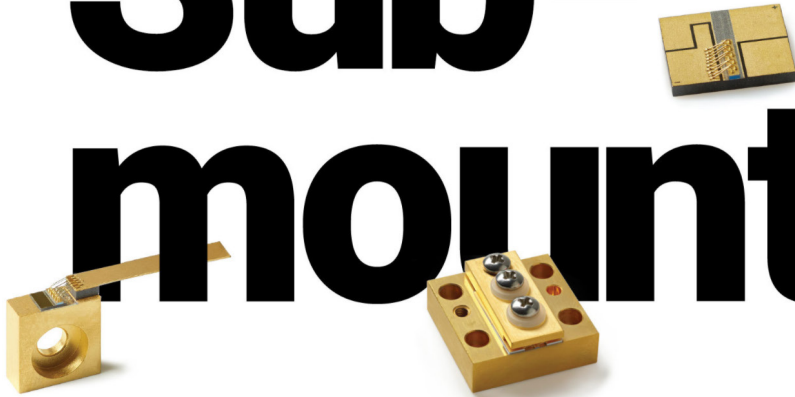


# Sub- mount



## Series



**CM**



**CMC**



**CL**



**CS**



**BM**



**QA**

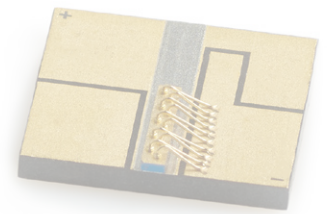


**COS** (C2, C3, C4, C4+)

Sheumann's S Series chip on submount (COS) products are mounted on an AlN carrier on CuW or Cu submount with In or AuSn bonding. Sheumann's proprietary laser chip design offers unrivaled quality and long lifetime. Wavelength emission range 780-1070nm with narrow tolerance options.



Submount  
SERIES



## Wavelength emission range 780-1070nm

**CM**



CATEGORY	SPECIFICATIONS
Dimensions	2.21mm L x 6.36mm W x 6.86mm H
Single-mode Power	Up to 500mW
Multimode Power	Up to 10W
Emitter Options	400-600-1000µm
CL Max	3.6

**CMC**



CATEGORY	SPECIFICATIONS
Dimensions	2.21mm L x 6.36mm W x 6.86mm H
Single-mode Power	Up to 300mW
Multimode Power	Up to 10W
Emitter Options	4-200µm
CL Max	2.0

**CL**



CATEGORY	SPECIFICATIONS
Dimensions	4.5mm L x 6.36mm W x 6.86mm H
Single-mode Power	Up to 500mW
Multimode Power	Up to 15W
Emitter Options	4-400µm
CL Max	3.6

**CS**



CATEGORY	SPECIFICATIONS
Dimensions	24.9mm L x 24.9mm W x 7.5mm H
Multimode Power	Up to 20W
Emitter Options	400-600-1000µm
CL Max	3.6

**BM**



CATEGORY	SPECIFICATIONS
Dimensions	3.00mm L x 6.35mm W x 3.0mm H
Single-mode Power	Up to 500mW
Multimode Power	Up to 10W
Emitter Options	4-400µm
CL Max	3.0

**QA**



CATEGORY	SPECIFICATIONS
Dimensions	2.5mm L x 4.0mm W x 1.0mm H
Single-mode Power	Up to 300mW
Multimode Power	Up to 6W
Emitter Options	4-200µm
CL Max	2.0

**COS**



CATEGORY	SPECIFICATIONS			
	C2 COS	C3 COS	C4 COS	C4+ COS
Single-mode Power	Up to 300mW	Up to 300mW	Up to 500mW	Up to 500mW
Multimode Power	Up to 2W	Up to 2W	Up to 15W	Up to 15W
Emitter Options	4-50µm	4-50µm	4-400µm	4-400µm
CL Max	2.0	3.0	4.0	4.5